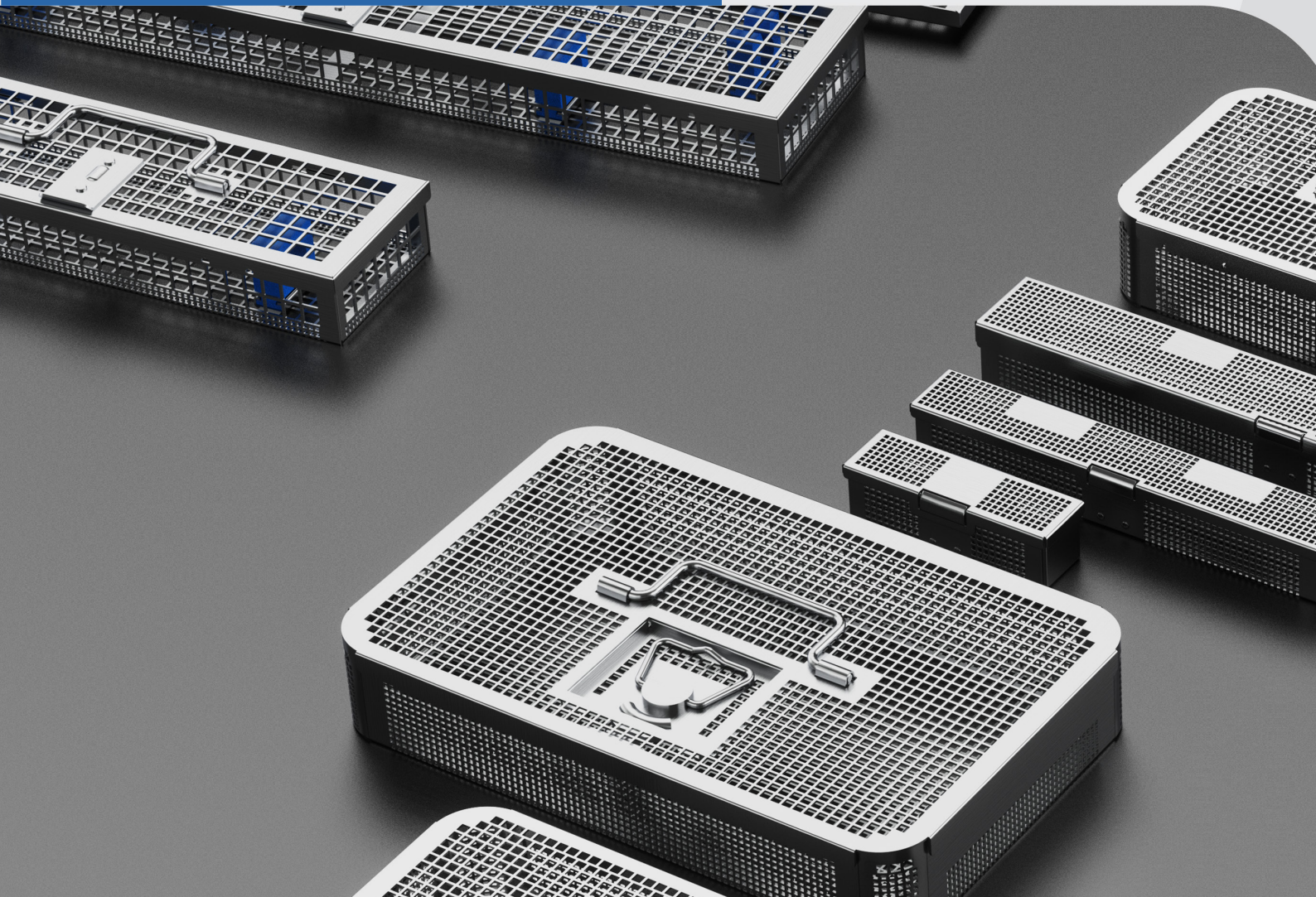
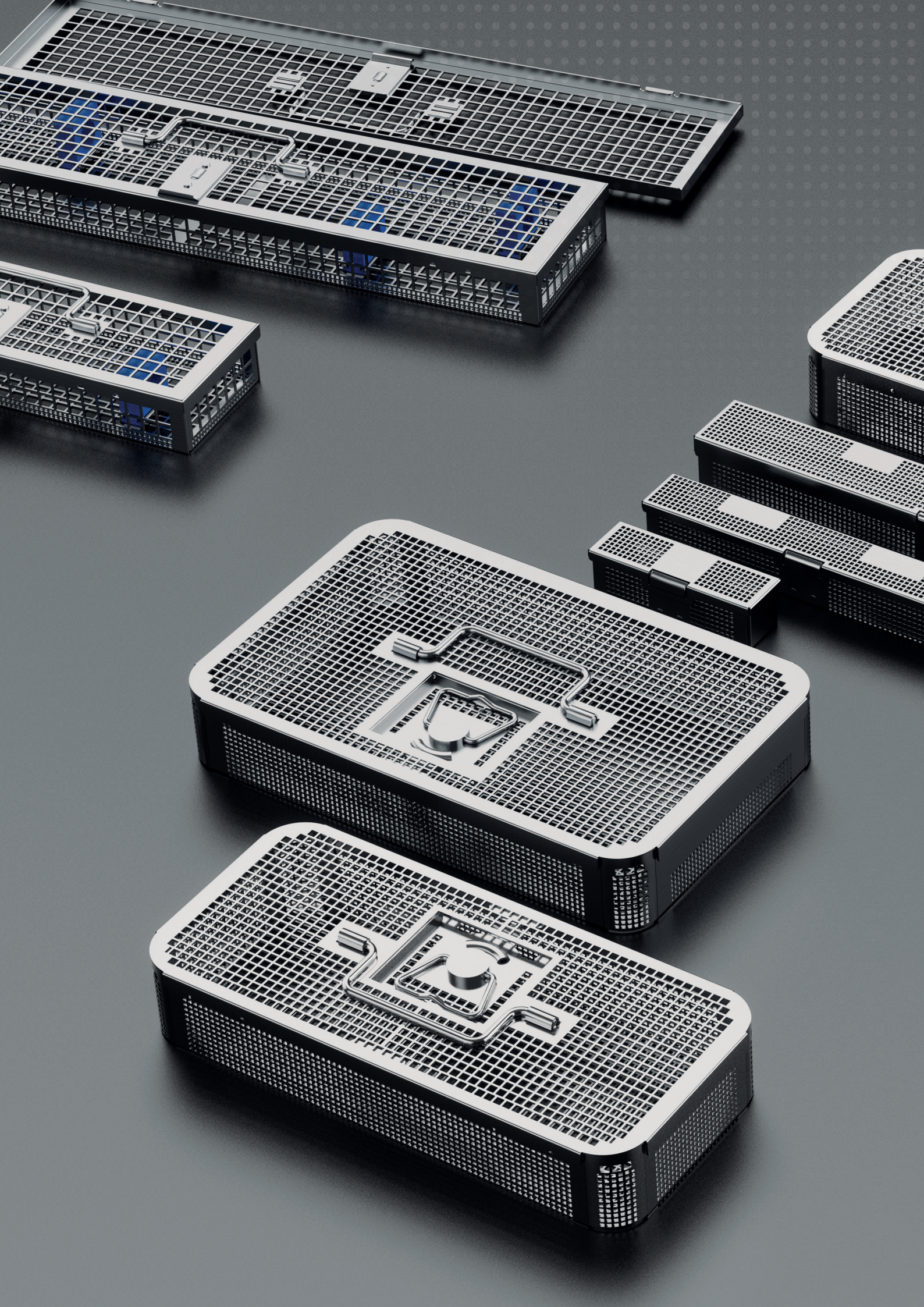




# Perforated Trays & Wire Baskets





# CONTENTS

**Standard & Wide Body**

4-5

**Mini & Dental**

6-7

**Hanging Trays**

7

**Optic**

8-9

**Hinged Models**

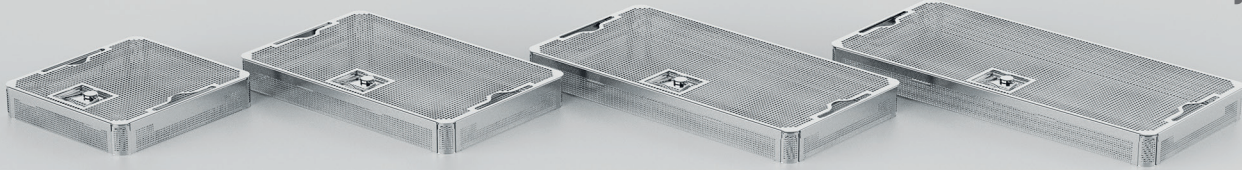
10-11

**Ringed Models**

12-13

# Standard

## Perforated Trays



### Types

Outside Dimensions (mm)  
Inside Dimensions (mm)



Polymer Foot  
Y835.00



Base

Half Size	Middle Size	DIN Size	Full Size	Long	Wide
Y380.03 242x252x25	Y280.03 405x252x25	Y180.03 484x252x25	Y181.03 539x252x25	Y182.03 655x252x25	Y183.03 530x330x25
Y380.05 242x252x45	Y280.05 405x252x45	Y180.05 484x252x45	Y181.05 539x252x45	Y182.05 655x252x45	Y183.05 530x330x45
Y380.07 242x252x65	Y280.07 405x252x65	Y180.07 484x252x65	Y181.07 539x252x65	Y182.07 655x252x65	Y183.07 530x330x65
Y380.10 242x252x95	Y280.10 405x252x95	Y180.10 484x252x95	Y181.10 539x252x95	Y182.10 655x252x95	Y183.10 530x330x95



Base & Lid

Y380.03L 246x256x25	Y280.03L 409x256x25	Y180.03L 488x256x25	Y181.03L 543x256x25	Y182.03L 655x252x25	Y183.03L 530x330x25
Y380.05L 246x256x45	Y280.05L 409x256x45	Y180.05L 488x256x45	Y181.05L 543x256x45	Y182.05L 655x252x45	Y183.05L 530x330x45
Y380.07L 246x256x65	Y280.07L 409x256x65	Y180.07L 488x256x65	Y181.07L 543x256x65	Y182.07L 655x252x65	Y183.07L 530x330x65
Y380.10L 246x256x95	Y280.10L 409x256x95	Y180.10L 488x256x95	Y181.10L 543x256x95	Y182.10L 655x252x95	Y183.10L 530x330x95



Base (With Feet)

Y380.03F 242x252x40	Y280.03F 405x252x40	Y180.03F 484x252x40	Y181.03F 539x252x40	Y182.03F 655x252x40	Y183.03F 530x330x40
Y380.05F 242x252x60	Y280.05F 405x252x60	Y180.05F 484x252x60	Y181.05F 539x252x60	Y182.05F 655x252x60	Y183.05F 530x330x60
Y380.07F 242x252x80	Y280.07F 405x252x80	Y180.07F 484x252x80	Y181.07F 539x252x80	Y182.07F 655x252x80	Y183.07F 530x330x80
Y380.10F 242x252x110	Y280.10F 405x252x110	Y180.10F 484x252x110	Y181.10F 539x252x110	Y182.10F 655x252x110	Y183.10F 530x330x110



Base & Lid  
(With Feet)

Y380.03FL 246x256x40	Y280.03FL 409x256x40	Y180.03FL 488x256x40	Y181.03FL 543x256x40	Y182.03FL 655x252x40	Y183.03FL 530x330x40
Y380.05FL 246x256x60	Y280.05FL 409x256x60	Y180.05FL 488x256x60	Y181.05FL 543x256x60	Y182.05FL 655x252x60	Y183.05FL 530x330x60
Y380.07FL 246x256x80	Y280.07FL 409x256x80	Y180.07FL 488x256x80	Y181.07FL 543x256x80	Y182.07FL 655x252x80	Y183.07FL 530x330x80
Y380.10FL 246x256x110	Y280.10FL 409x256x110	Y180.10FL 488x256x110	Y181.10FL 543x256x110	Y182.10FL 655x252x110	Y183.10FL 530x330x110

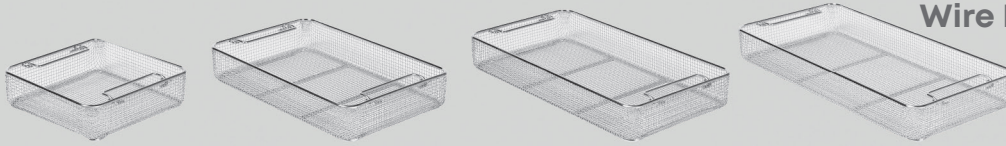


Lid

Y380.01 246x256x15	Y280.01 409x256x15	Y180.01 488x256x15	Y181.01 543x256x15	Y182.01 659x256x15	Y183.01 534x334x15
-----------------------	-----------------------	-----------------------	-----------------------	-----------------------	-----------------------

# Standard

## Wire Baskets



### Types

Outside Dimensions (mm)  
Inside Dimensions (mm)



Base

Half Size	Middle Size	DIN Size	Full Size
Y390.03 245x255x30	Y290.03 405x255x30	Y190.03 485x255x30	Y191.03 540x255x30
Y390.05 245x255x50	Y290.05 405x255x50	Y190.05 485x255x50	Y191.05 540x255x50
Y390.07 245x255x70	Y290.07 405x255x70	Y190.07 485x255x70	Y191.07 540x255x70
Y390.10 245x255x100	Y290.10 405x255x100	Y190.10 485x255x100	Y191.10 540x255x100



Lid

Y390.01 215x240	Y290.01 375x240	Y190.01 455x240	Y191.01 510x240
--------------------	--------------------	--------------------	--------------------



# Wide Body

## Wire Baskets

### Types

Outside Dimensions (mm)  
Inside Dimensions (mm)



Base

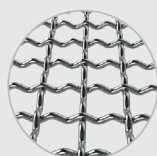
Wide Body  
(Intermediate Crimp)

Y190.55  
470x337x51

Y191.60  
533x337x101

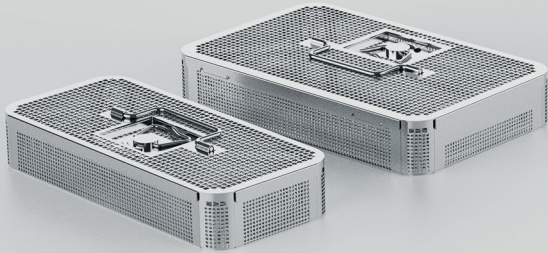
Product Details

Base & Lid  
Intermediate Crimp



# Mini & Dental

## Rounded Perforated



### Types

Outside Dimensions (mm)  
Inside Dimensions (mm)

#### Mini Model



Base & Lid

Y480.04  
270x123x45

Y480.06  
270x123x65

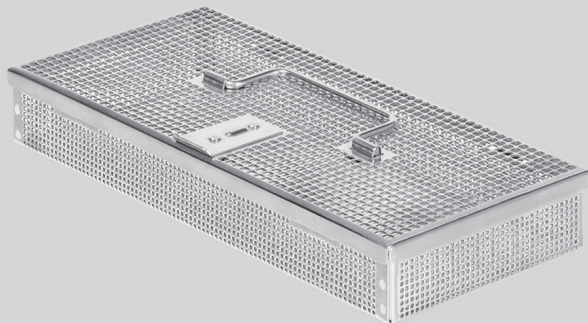
#### Dental Model



Base & Lid

Y580.05  
270x170x50

Y580.10  
270x170x100



# Mini & Dental

## Cornered Perforated

#### Mini Model



Base & Lid

Y481.04  
270x123x45

Y481.06  
270x123x65

#### Dental Model



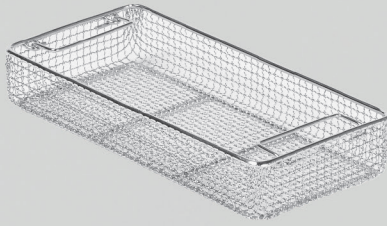
Base & Lid

Y581.05  
270x170x50

Y581.10  
270x170x100

# Mini & Dental

## Wire Baskets



### Types

Outside Dimensions (mm)  
Inside Dimensions (mm)

#### Mini Model



Base

Y490.05  
265x120x45

#### Dental Model

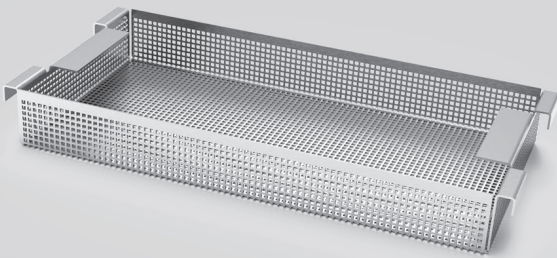
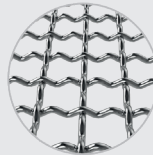


Base

Y590.12  
270x170x45

### Product Details

Base  
Intermediate Crimp



## Hanging Trays

### Types

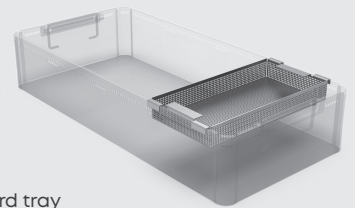
Outside Dimensions (mm)  
Inside Dimensions (mm)



Base

Y480.20	254x70x30 mm
Y480.22	254x120x30 mm
Y480.24	254x170x30 mm
Y480.26	254x240x30 mm

Compatible with standard tray and basket series.

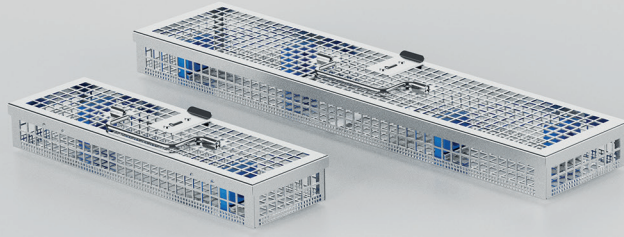


Individually usable for sterilization requirements.



# Optic

## Perforated Trays



### Types

Outside Dimensions (mm)  
Inside Dimensions (mm)

#### Single Scope



Base & Lid

Y695.00  
272x83x44

Y696.00  
452x83x44

#### Double Scope



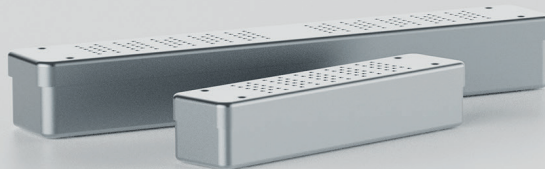
Base & Lid

Y695.03  
272x103x44

Y696.03  
452x103x44

# Scopy Model

## Container



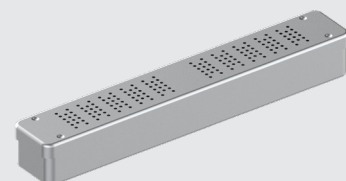
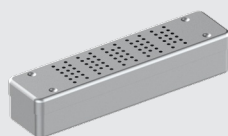
Lid Perforated  
Base Perforated

250x60x50  
250x55x45

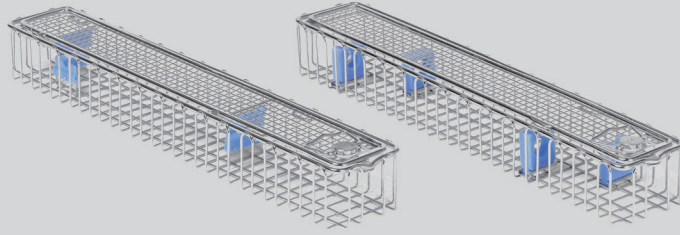
Y600.01

450x70x70  
450x65x65

Y600.02







### Types

Outside Dimensions (mm)  
Inside Dimensions (mm)



Base & Lid

#### Single Scope

Y690.02  
290x80x55

Y690.04  
460x80x55

Y690.06  
670x80x55

#### Double Scope

Y690.03  
290x80x55

Y690.05  
460x80x55



Silicone Holder  
(Type 1)



Base & Lid

#### Single Scope

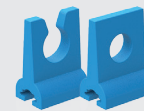
Y691.02  
290x80x55

Y691.04  
460x80x55

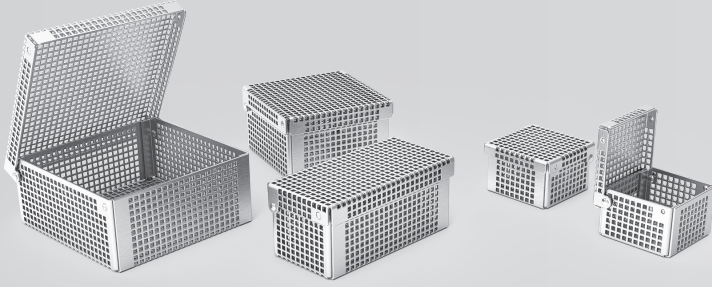
#### Double Scope

Y691.03  
290x80x55

Y691.05  
460x80x55



Silicone Holder  
(Type 2)

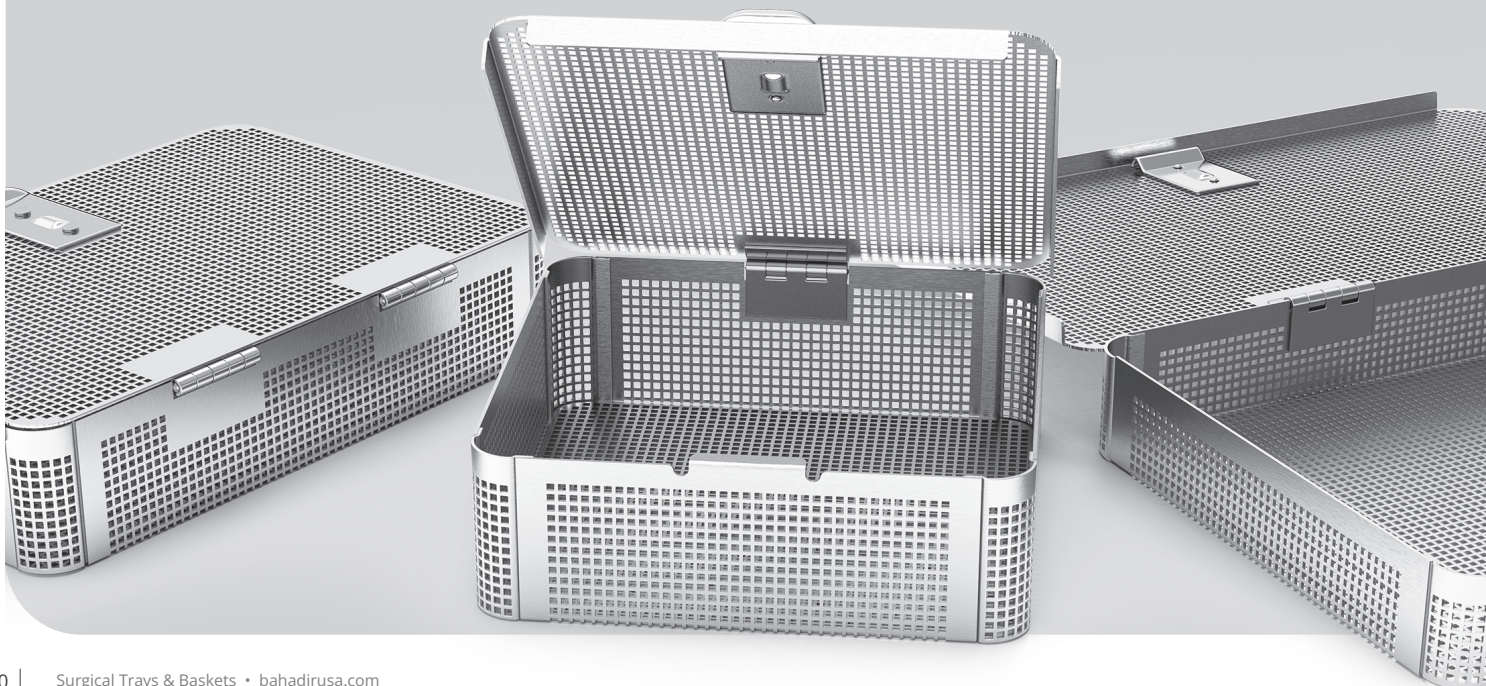


# Hinged Model

## Micro & Small Trays

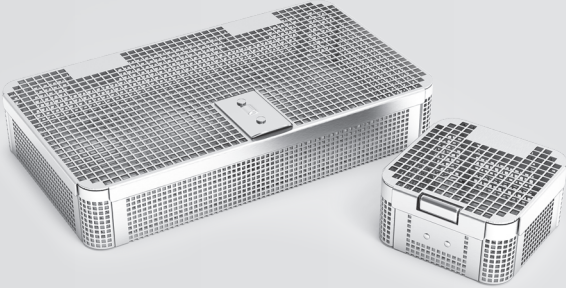
Code	Outside Dimensions (mm)	Lock System	<ul style="list-style-type: none"> <li>• Embossed lock system</li> <li>• 2x2mm perforated bottom and lid</li> </ul>
Y580.20	40x40x25	Embossed lock system	
Y580.21	60x60x25	Embossed lock system	
Y580.22	60x60x40	Embossed lock system	
Y580.23	80x80x25	Embossed lock system	
Y580.24	80x80x40	Embossed lock system	
Y580.25	80x40x40	Embossed lock system	

Code	Outside Dimensions (mm)	Lock System	<ul style="list-style-type: none"> <li>• Sliding flat lock system</li> <li>• 2x2mm perforated bottom and lid</li> </ul>
Y580.30	100x30x25	Push lock system	
Y580.31	160x30x25	Push lock system	
Y580.32	200x30x25	Push lock system	
Y580.33	240x40x40	Push lock system	
Y580.34	300x40x40	Push lock system	
Y580.35	450x40x40	Push lock system	
Y581.20	115x90x45	Sliding flat lock system	
Y581.21	115x115x25	Sliding flat lock system	
Y581.22	145x150x50	Sliding flat lock system	
Y581.23	170x135x35	Sliding flat lock system	
Y581.24	210x145x25	Sliding flat lock system	
Y581.25	210x145x45	Sliding flat lock system	
Y581.26	240x240x45	Sliding flat lock system	
Y581.27	275x175x35	Sliding flat lock system	
Y581.28	280x170x60	Sliding flat lock system	



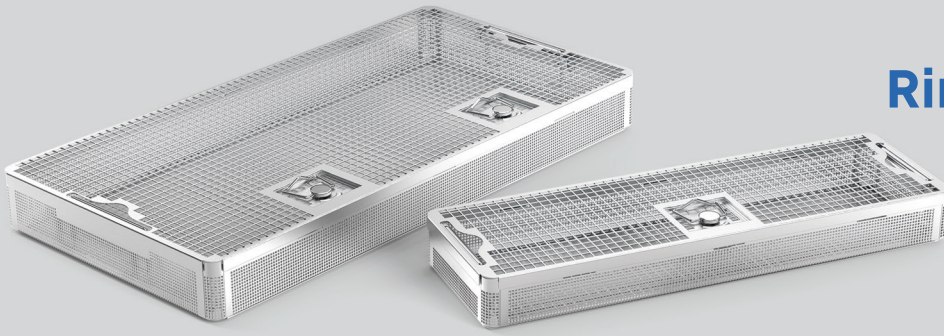
# Hinged Model

## Large Trays



Code	Outside Dimensions (mm)	Lock System	<ul style="list-style-type: none"> <li>• Sliding flat lock system</li> <li>• 4x4mm perforated bottom and lid</li> </ul>
Y581.40	80x80x40	Push lock system	
Y581.41	100x80x30	Sliding flat lock system	
Y581.42	130x115x40	Sliding flat lock system	
Y581.43	130x115x60	Sliding flat lock system	
Y581.44	195x70x40	Sliding flat lock system	
Y581.45	225x130x40	Sliding flat lock system	
Y581.46	250x115x25	Sliding flat lock system	
Y581.47	250x115x40	Sliding flat lock system	
Y581.48	250x115x60	Sliding flat lock system	
Y581.49	480x115x50	Sliding flat lock system	
Y581.50	270x123x45	Sliding flat lock system	
Y581.51	270x123x65	Sliding flat lock system	
Y581.52	270x170x50	Sliding flat lock system	
Y581.53	270x170x100	Sliding flat lock system	

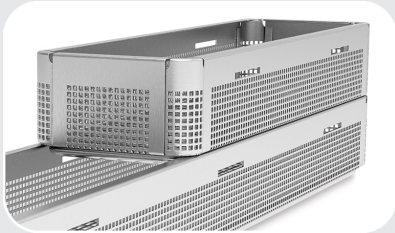
\*Dimensions: width x length x height (with tolerances up to ±5mm)



# Ringed Model

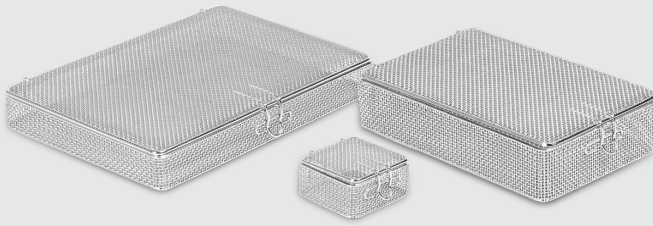
## Perforated Trays

Code	Outside Dimensions (mm)	Type	<ul style="list-style-type: none"> <li>• 8x8 mm perforated bottom and lid</li> <li>• 2x2 mm perforated sides</li> </ul>
Y680.10	272x83x44	Without Handle	
Y680.11	272x103x44	Without Handle	
Y680.12	452x83x44	Without Handle	
Y680.13	452x103x44	Without Handle	
Y680.14	480x150x50		
Y680.15	600x150x50		
Y680.16	600x150x80		
Y680.17	600x300x60		
Y680.18	650x150x70		
Y680.19	670x290x70		
Y680.20	750x150x80		



# Fine Mesh

## Wire Baskets



### Type 1

Y591.01  
80x80x40

Y591.03  
145x150x50

Y591.07  
220x140x50

Y591.08  
275x175x35

Y591.09  
280x170x60

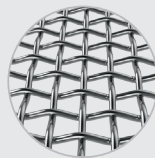
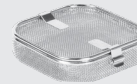


Base & Lid

### Type 2

Y591.50  
115X115X335

Y591.55  
240X120X35



Base & Lid  
Fine Wire Mesh



# INDEX

## Numerical

Code	Page	Code	Page	Code	Page	Code	Page	Code	Page
Y180.01.....	4	Y181.10L.....	4	Y183.10FL.....	4	Y380.03FL.....	4	Y580.23.....	10
Y180.03.....	4	Y182.01.....	4	Y183.10L.....	4	Y380.03L.....	4	Y580.24.....	10
Y180.03F.....	4	Y182.03.....	4	Y190.01.....	5	Y380.05.....	4	Y580.25.....	10
Y180.03FL.....	4	Y182.03F.....	4	Y190.03.....	5	Y380.05F.....	4	Y580.30.....	10
Y180.03L.....	4	Y182.03FL.....	4	Y190.05.....	5	Y380.05FL.....	4	Y580.31.....	10
Y180.05.....	4	Y182.03L.....	4	Y190.07.....	5	Y380.05L.....	4	Y580.32.....	10
Y180.05F.....	4	Y182.05.....	4	Y190.10.....	5	Y380.07.....	4	Y580.33.....	10
Y180.05FL.....	4	Y182.05F.....	4	Y190.55.....	5	Y380.07F.....	4	Y580.34.....	10
Y180.05L.....	4	Y182.05FL.....	4	Y191.01.....	5	Y380.07FL.....	4	Y580.35.....	10
Y180.07.....	4	Y182.05L.....	4	Y191.03.....	5	Y380.07L.....	4	Y581.05.....	6
Y180.07F.....	4	Y182.07.....	4	Y191.05.....	5	Y380.10.....	4	Y581.10.....	6
Y180.07FL.....	4	Y182.07F.....	4	Y191.07.....	5	Y380.10F.....	4	Y581.20.....	10
Y180.07L.....	4	Y182.07FL.....	4	Y191.10.....	5	Y380.10FL.....	4	Y581.21.....	10
Y180.10.....	4	Y182.07L.....	4	Y191.60.....	5	Y380.10L.....	4	Y581.22.....	10
Y180.10F.....	4	Y182.10.....	4	Y280.03.....	4	Y390.01.....	5	Y581.23.....	10
Y180.10FL.....	4	Y182.10F.....	4	Y280.03F.....	4	Y390.03.....	5	Y581.24.....	10
Y180.10L.....	4	Y182.10FL.....	4	Y280.03FL.....	4	Y390.05.....	5	Y581.25.....	10
Y181.01.....	4	Y182.10L.....	4	Y280.03L.....	4	Y390.07.....	5	Y581.26.....	10
Y181.03.....	4	Y183.01.....	4	Y280.05.....	4	Y390.10.....	5	Y581.27.....	10
Y181.03F.....	4	Y183.03.....	4	Y280.05F.....	4	Y480.04.....	6	Y581.28.....	10
Y181.03FL.....	4	Y183.03F.....	4	Y280.05FL.....	4	Y480.06.....	6	Y581.40.....	11
Y181.03L.....	4	Y183.03FL.....	4	Y280.05L.....	4	Y480.20.....	7	Y581.41.....	11
Y181.05.....	4	Y183.03L.....	4	Y280.10.....	4	Y480.22.....	7	Y581.42.....	11
Y181.05F.....	4	Y183.05.....	4	Y280.10F.....	4	Y480.24.....	7	Y581.43.....	11
Y181.05FL.....	4	Y183.05F.....	4	Y280.10FL.....	4	Y480.26.....	7	Y581.44.....	11
Y181.05L.....	4	Y183.05FL.....	4	Y280.10L.....	4	Y481.04.....	6	Y581.45.....	11
Y181.07.....	4	Y183.05L.....	4	Y290.01.....	5	Y481.06.....	6	Y581.46.....	11
Y181.07F.....	4	Y183.07.....	4	Y290.03.....	5	Y490.05.....	7	Y581.47.....	11
Y181.07FL.....	4	Y183.07F.....	4	Y290.05.....	5	Y580.05.....	6	Y581.48.....	11
Y181.07L.....	4	Y183.07FL.....	4	Y290.10.....	5	Y580.10.....	6	Y581.49.....	11
Y181.10.....	4	Y183.07L.....	4	Y380.01.....	4	Y580.20.....	10	Y581.50.....	11
Y181.10F.....	4	Y183.10.....	4	Y380.03.....	4	Y580.21.....	10	Y581.51.....	11
Y181.10FL.....	4	Y183.10F.....	4	Y380.03F.....	4	Y580.22.....	10	Y581.52.....	11

Code	Page
------	------

Y581.53.....	11
Y590.12.....	7
Y591.01.....	13
Y591.03.....	13
Y591.07.....	13
Y591.08.....	13
Y591.09.....	13
Y591.50.....	13
Y591.55.....	13
Y600.01.....	8
Y600.02.....	8
Y680.10.....	12
Y680.11.....	12
Y680.12.....	12
Y680.13.....	12
Y680.14.....	12
Y680.15.....	12
Y680.16.....	12
Y680.17.....	12
Y680.18.....	12
Y680.19.....	12
Y680.20.....	12
Y690.02.....	9
Y690.03.....	9
Y690.04.....	9
Y690.05.....	9
Y690.06.....	9
Y691.02.....	9
Y691.03.....	9
Y691.04.....	9
Y691.05.....	9
Y695.00.....	8
Y695.03.....	8
Y696.00.....	8
Y696.03.....	8
Y835.00.....	4





## **BAHADIR USA LLC**

422 S Pennsville Auburn Rd Penns Grove, NJ 08069  
Tel. +1 856 517 3080  
info@bahadirusa.com - www.bahadirusa.com

### **Perforated Trays & Wire Baskets**

**2024 Version**

Copyright © 2024, Bahadir Companies. All rights reserved. All visual and textual contents in this catalog are protected by copyrights and other rights owned by Bahadir Companies. We reserve the right to modify our products at any time.

**bahadirusa.com**